








# Grating Selection and Accessories

## Safe-T-Span® Pultruded Industrial Series Grating

6" Tie Bar Spacing Standard										
Series	Panel Depth	Load Bar Spacing	Stocked Sizes		Load Bars/Ft.	Wt/ Sq. Ft.	Open Area	Resin/Color		
			Width	Length				ISOFR	VEFR	PHENOLIC*
I6010	1"	1-1/2"	3', 4'	10', 12', 20', 24'	8	2.4 lbs	60%	Yellow	Dk Gray	—
I5010	1"	1.2"	3', 4'	10', 12', 20', 24'	10	3.3 lbs	50%	Yellow	Dk Gray	—
I4010 	1"	1"	3', 4'	10', 12', 20', 24'	12	3.4 lbs	40%	Yellow	Dk Gray	—
I6015	1-1/2"	1-1/2"	3', 4'	10', 12', 20', 24'	8	2.8 lbs	60%	Yellow	Dk Gray	Brown
I5015	1-1/2"	1.2"	3', 4'	10', 12', 20', 24'	10	3.5 lbs	50%	Yellow	Dk Gray	—
I4015 	1-1/2"	1"	3', 4'	10', 12', 20', 24'	12	4.1 lbs	40%	Yellow	Dk Gray	Brown
T5020	2"	2"	3', 4'	10', 12', 20', 24'	6	3.1 lbs	50%	Yellow	Dk Gray	—
T3320 	2"	1-1/2"	3', 4'	10', 12', 20', 24'	8	4.0 lbs	33%	Yellow	Dk Gray	—

\*Phenolic Grating also available with UV coating - Awning Red color

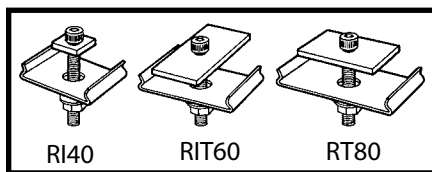
## Safe-T-Span® Pultruded Pedestrian Series Grating

12" Tie Bar Spacing Standard										
Series	Panel Depth	Load Bar Spacing	Stocked Sizes		Load Bars/Ft.	Wt/ Sq. Ft.	Open Area	Resin/Color		
			Width	Length				ISOFR	VEFR	PHENOLIC*
T3810	1"	2.4"	3', 4'	10', 12', 20', 24'	5	1.9 lbs	38%	Dk Gray	Dk Gray	—
T2510 	1"	2"	3', 4'	10', 12', 20', 24'	6	2.3 lbs	25%	Dk Gray	Dk Gray	—
T1210 	1"	1.7"	3', 4'	10', 12', 20', 24'	7	2.7 lbs	12%	Dk Gray*	Dk Gray*	—
T3815	1-1/2"	2.4"	3', 4'	10', 12', 20', 24'	5	2.7 lbs	38%	Dk Gray	Dk Gray	—
T2515 	1-1/2"	2"	3', 4'	10', 12', 20', 24'	6	3.2 lbs	25%	Dk Gray	Dk Gray	—
T1215 	1-1/2"	1.7"	3', 4'	10', 12', 20', 24'	7	3.6 lbs	12%	Dk Gray*	Dk Gray*	—

(5' widths and 8', 12' and 24' lengths available with extended lead times) For load/deflection information on pultruded grating, see tables in this brochure.

\*Top surface of grating is light gray in color. Bottom of grating is dark gray.

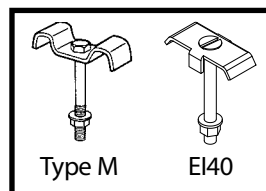
## Clip Assemblies



Fibergrate's patented Type R Hold Down Clip Assembly of Type 316 stainless steel offers effective and easy installation of pultruded grating. Type R Hold Down Clips secure grating below the walking surface. (RI40 for I4010 and I4015 grating • RIT60 for I6010, I6015 and T3320 grating • RT80 for T5020 grating • RT12 for T1210 and T1215 grating • RT25 for T2510 and T2515 grating)



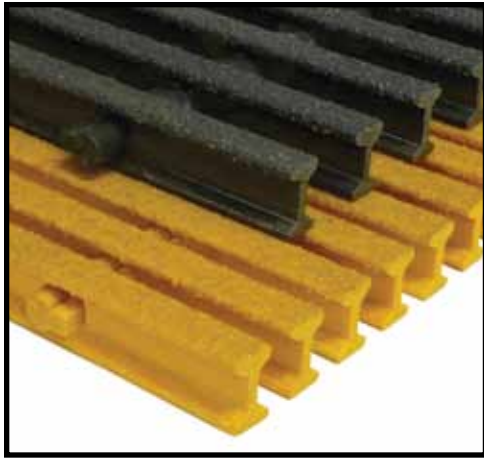
The T12 Spring Clip is designed for specialty applications where grating needs to be removed without removing the hardware. The grating is held securely in place below the surface, but can be released with a firm upward force. (For the T12 Pultruded Grating Series)



Fibergrate also offers Type M, W and E Hold Down Clip Assemblies for many types of pultruded grating. (EI40 for I4010 and I4015 grating • MI60 for I6010 and I6015 grating • MT5020 for T5020 grating • MT3320 for T3320 grating • MT3810 for T3810 grating • MT3815 for T3815 grating • W4S Clip for HI47 grating • WHM Clip for HI58 grating)

**Sealing Kits:** To maintain corrosion resistance and structural integrity, Fibergrate offers standard resin sealing kits for protecting the exposed ends of cut panels and other components.

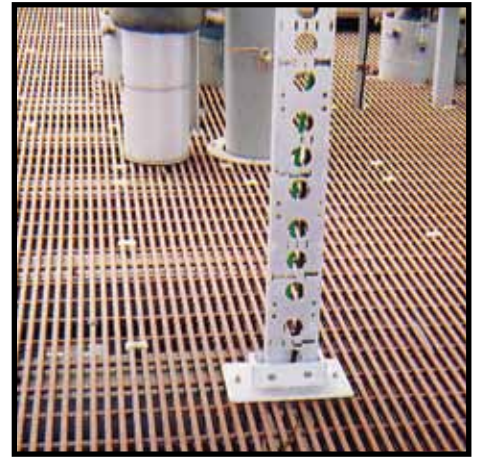
# Safe-T-Span® Industrial Grating Details



I4010 & I6010 Grating



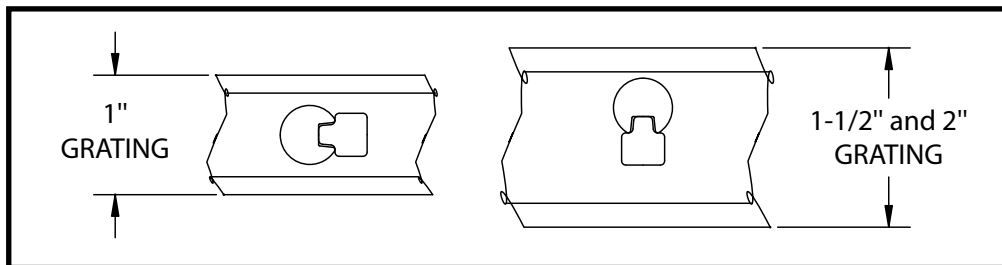
Copper Mining Facility



Offshore Oil & Gas Platform

Safe-T-Span industrial grating is available in 1", 1-1/4" and 1-1/2" depths in an I-bar configuration with 40%, 50% and 60% open areas. 2" depth T-bar configuration with 33% or 50% open area is also available for applications which require wider spans or lower deflections. For details and load charts for 1-1/4" depth products, please visit our website at [www.fibergrate.com](http://www.fibergrate.com) > Products > Pultruded Grating > Custom Pultruded Gratings

## Tie Bar Representation

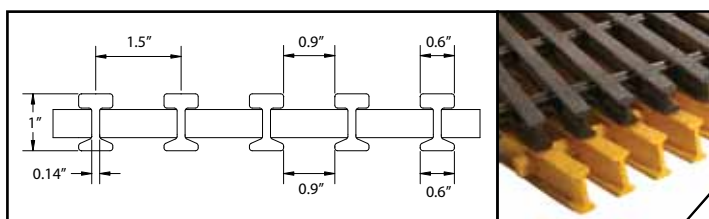


## Grating Details

Refer to chart on page 4 for Grating Selection.

### 1" Deep I6010

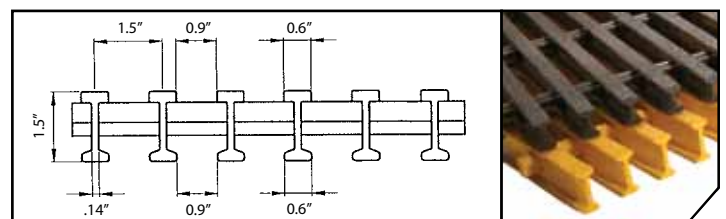
# of Bars/ Ft of Width	Load Bar Depth	Open Area	Load Bar Centers	Approximate Weight
8	1"	60%	1-1/2"	2.62 psf



Section Properties per Ft of Width:  $A = 2.64 \text{ IN}^2$   $I = 0.33 \text{ IN}^4$   $S = 0.63 \text{ IN}^3$   
Average  $EI = 1,700,000 \text{ lb} \cdot \text{in}^2$  (SPAN  $\geq 24"$ )

### 1-1/2" Deep I6015

# of Bars/ Ft of Width	Load Bar Depth	Open Area	Load Bar Centers	Approximate Weight
8	1-1/2"	60%	1-1/2"	2.83 psf



Section Properties per Ft of Width:  $A = 3.2 \text{ IN}^2$   $I = 0.94 \text{ IN}^4$   $S = 1.2 \text{ IN}^3$   
Average  $EI = 4,600,000 \text{ lb} \cdot \text{in}^2$  (SPAN  $\geq 24"$ )

# Safe-T-Span® Industrial Grating Details



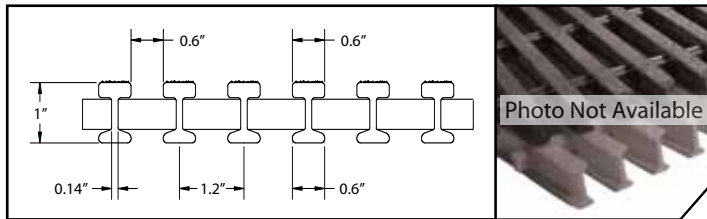
Railway Access



Roller Coaster Entrance Ramp

## 1" Deep I5010

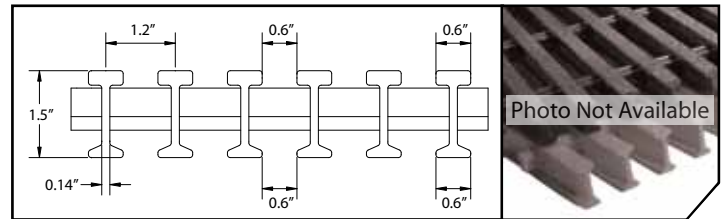
# of Bars/ Ft of Width	Load Bar Depth	Open Area	Load Bar Centers	Approximate Weight
10	1"	50%	1.2"	3.3 psf



Section Properties per Ft of Width:  $A = 3.3 \text{ IN}^2$   $I = 0.41 \text{ IN}^4$   $S = 0.79 \text{ IN}^3$   
Average EI = 2,100,000 lb - in<sup>2</sup> (SPAN ≥ 24")

## 1-1/2" Deep I5015

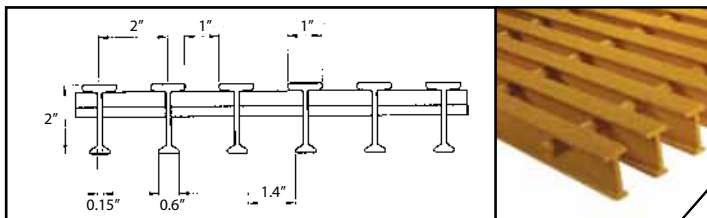
# of Bars/ Ft of Width	Load Bar Depth	Open Area	Load Bar Centers	Approximate Weight
10	1-1/2"	50%	1.2"	3.5 psf



Section Properties per Ft of Width:  $A = 4 \text{ IN}^2$   $I = 1.17 \text{ IN}^4$   $S = 1.65 \text{ IN}^3$   
Average EI = 5,700,000 lb - in<sup>2</sup> (SPAN ≥ 24")

## 2" Deep T5020

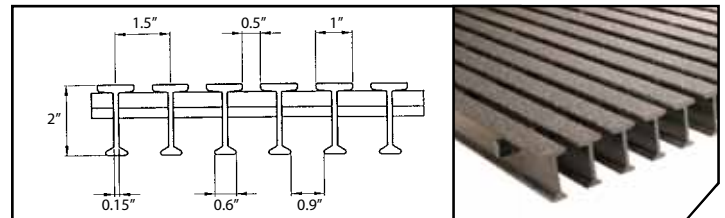
# of Bars/ Ft of Width	Load Bar Depth	Open Area	Load Bar Centers	Approximate Weight
6	2"	50%	2"	3.1 psf



Section Properties per Ft of Width:  $A = 3.2 \text{ IN}^2$   $I = 1.68 \text{ IN}^4$   $S_t = 1.96 \text{ IN}^3$   $S_b = 1.47 \text{ IN}^3$   
Average EI = 7,600,000 lb - in<sup>2</sup> (SPAN ≥ 24")

## 2" Deep T3320 (ADA Compliant)

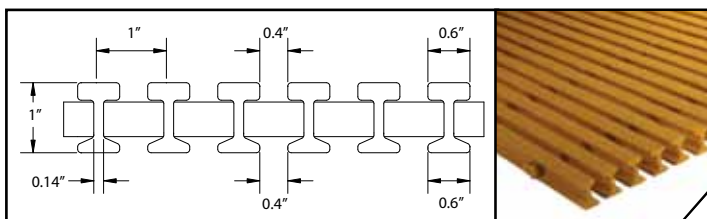
# of Bars/ Ft of Width	Load Bar Depth	Open Area	Load Bar Centers	Approximate Weight
8	2"	33%	1-1/2"	4 psf



Section Properties per Ft of Width:  $A = 4.28 \text{ IN}^2$   $I = 2.24 \text{ IN}^4$   $S_t = 2.61 \text{ IN}^3$   $S_b = 1.96 \text{ IN}^3$   
Average EI = 9,200,000 lb - in<sup>2</sup> (SPAN ≥ 24")

## 1" Deep I4010 (ADA Compliant)

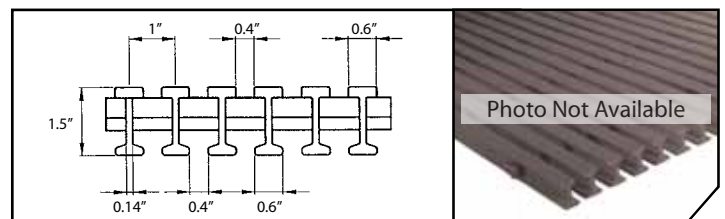
# of Bars/ Ft of Width	Load Bar Depth	Open Area	Load Bar Centers	Approximate Weight
12	1"	40%	1"	3.41 psf



Section Properties per Ft of Width:  $A = 3.96 \text{ IN}^2$   $I = 0.5 \text{ IN}^4$   $S = 0.95 \text{ IN}^3$   
Average EI = 2,500,000 lb - in<sup>2</sup> (SPAN ≥ 24")

## 1-1/2" Deep I4015 (ADA Compliant)

# of Bars/ Ft of Width	Load Bar Depth	Open Area	Load Bar Centers	Approximate Weight
12	1-1/2"	40%	1"	4.13 psf



Section Properties per Ft of Width:  $A = 4.8 \text{ IN}^2$   $I = 1.41 \text{ IN}^4$   $S = 1.8 \text{ IN}^3$   
Average EI = 7,000,000 lb - in<sup>2</sup> (SPAN ≥ 24")