

Non-Magnetic Access Flooring System

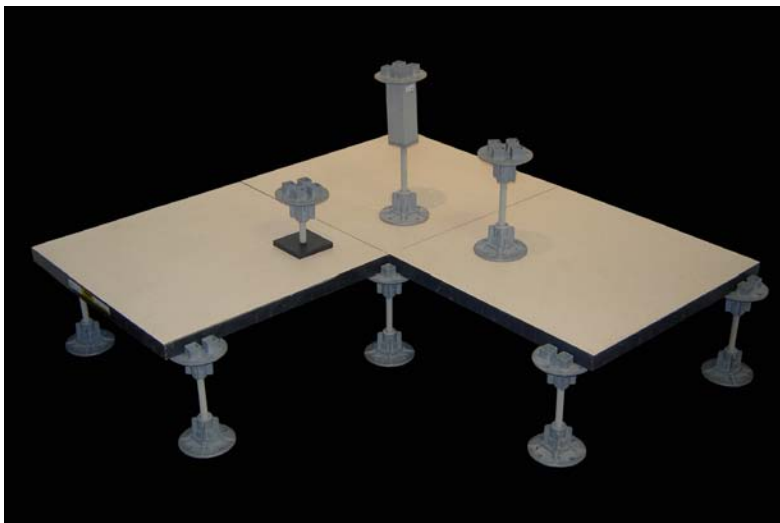
Metal access floor panels found in MRI magnet rooms are no longer allowed to be used due to new cable routing requirements that some MRI vendors have implemented.

Fibergrate Composite Structures' covered Micro-Mesh® grating panels and non-magnetic pedestals should be the first choice for customers or architects requiring MRI cable routing via flush or surface mounted access flooring. Fibergrate offers a completely non-magnetic system.

Fibergrate has customized our standard Micro-Mesh® panels and pedestal systems in order to provide a solid top Micro-Mesh® panel covered with a high pressure floor laminate and non-magnetic grating pedestals to more completely meet the needs of this new and demanding application. Pedestals are manufactured using Stainless Steel 316 nuts in the composite head and fiberglass reinforced plastic (FRP) rod for adjustability.



Fibergrate's Quad Head pedestals can be located anywhere within the Micro-Mesh® panel or to join two or four panels as shown.



Now offering covered Micro-Mesh® grating and totally non-magnetic pedestal system.

Fibergrate Composite Structures is the originator of molded fiberglass reinforced plastic (FRP) grating. With 40 years of experience, Fibergrate continues to lead the industry in innovative products and has the ability to provide customized solutions to address unique issues for our customers.

Surface Resistance

When tested according to the procedure outlined in NFPA 99, the high pressure floor laminate used to cover the Micro-Mesh grating panel has a maximum resistance of 20,000 megaohms measured between the laminate surface and an applicable ground reference.

Typical Values: 11,000-12,000 Megaohms

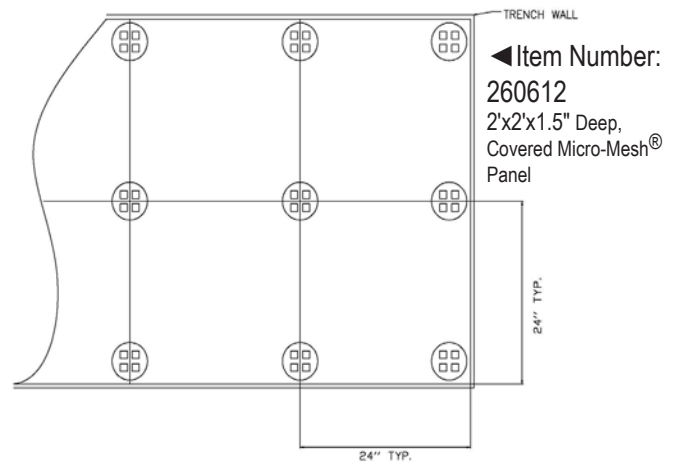
See reverse side for more detailed component information and part numbers.

Non-Magnetic Access Flooring System

"A" Dim.
Adjustment Range

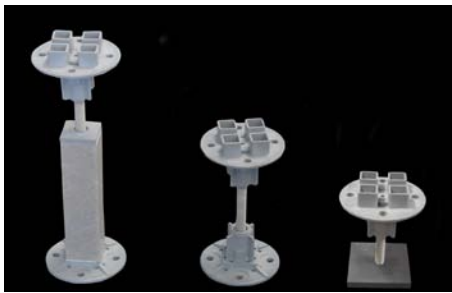
Item Number	Base	Min	Max
569605	FRP Base	5.0*	6.5
569706	5" Std Base	6.5	9.25
569708	5" Std Base	8.5	11.5
569810	5" Ext Base	10.5	13.5
569812	5" Ext Base	12.5	15.5
569814	5" Ext Base	14.5	17.5
569816	5" Ext Base	16.5	19.5
569818	5" Ext Base	18.5	21.5
569820	5" Ext Base	20.5	23.5
569822	5" Ext Base	22.5	25.5
260612	Micro-Mesh® 2'x2'x1.5" Deep, No Grit, Dk Gray, Covered with Antique White Papercraft High Pressure Laminate Designed for Raised Floor Panels		

Pedestal Layout

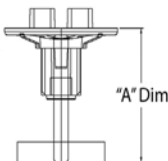


TYP LAYOUT
MAX DESIGN LOAD
150 PSF

*Pedestals as short as 3.5" are available on request. Contact Fibergrate for details.

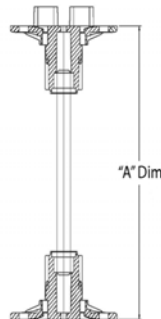


Flat Plate Base Model



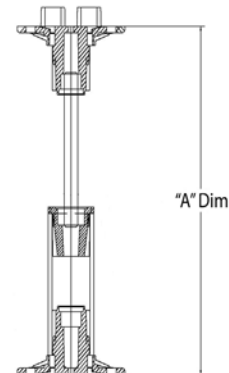
Item Number:
569605

5" Standard Base Model



Item Numbers:
569706, 569708

5" Extended Base Model



Item Numbers:
569810, 569812, 569814,
569816, 569818, 569820,
569822

For pricing, contact a sales representative in your area by visiting us on the web at www.fibergrate.com/distributor.asp or contact Fibergrate customer service at 972.250.1633 or 800.527.4043.